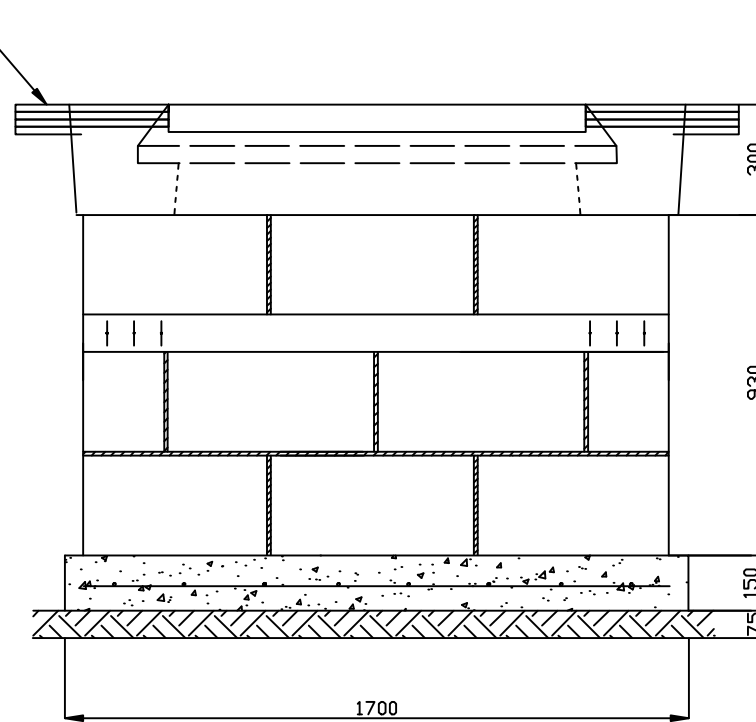
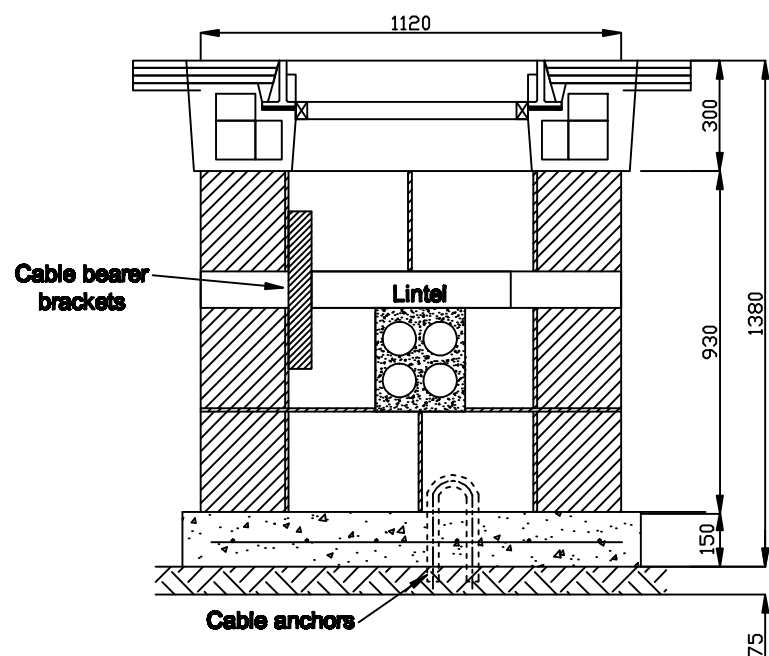


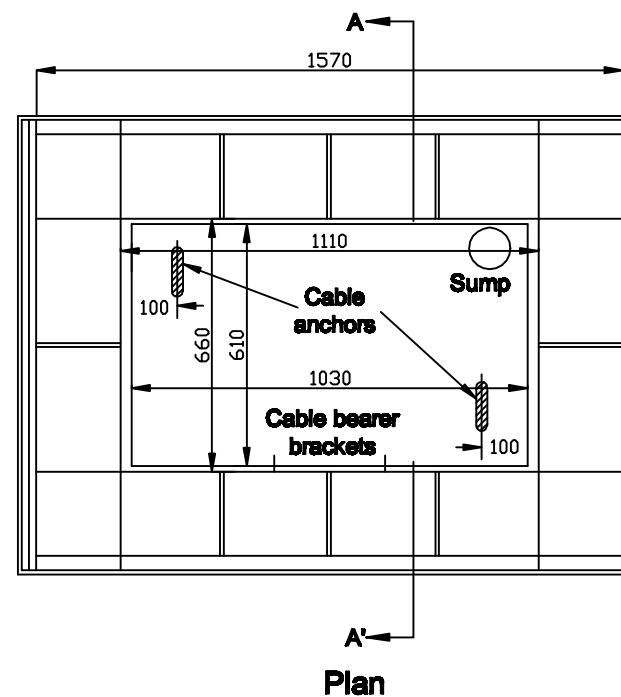
End Elevation



Side Elevation



Section A-A'



Plan

Notes:

1. Foundation plinth concrete to be grade C35 with min. cement content 290kg/m. Plinth to form 1250x1700x150mm chamber floor reinforced with B785 mesh centrally placed and bedded on 75mm concrete blinding grade C-10.
2. Concrete mix: 1 cement/ 1sand/ 2 washed pebble.
3. Vibrate using hydraulic vibrator and allow to set overnight.
4. Block layers to be in accordance with detail with 1200x215x100mm reinforced concrete lintel to I.S. 240 above duct opes. Allow 3 days for blockwork mortar to cure before backfilling voids outside blockwork with grade C20/10 concrete well consolidated with a mechanical compactor.
5. Mortar to be 1:3 cement/sand mix.
6. Size of block= 573x273x230
7. All joints to be 8 to 15mm thick.
8. Cover frame to be fully bedded on min. of 10mm designation 1 mortar.
9. Position of cable bearer brackets and sump to be decided on site.
10. Anchor irons to be set in floor with base of irons below mesh.

Rev :	Remarks :	Drawn :	Date :	Title :
-	Issued drawing.		August 2007	
A	Change Logo to TM	M.Borg	March 2010	