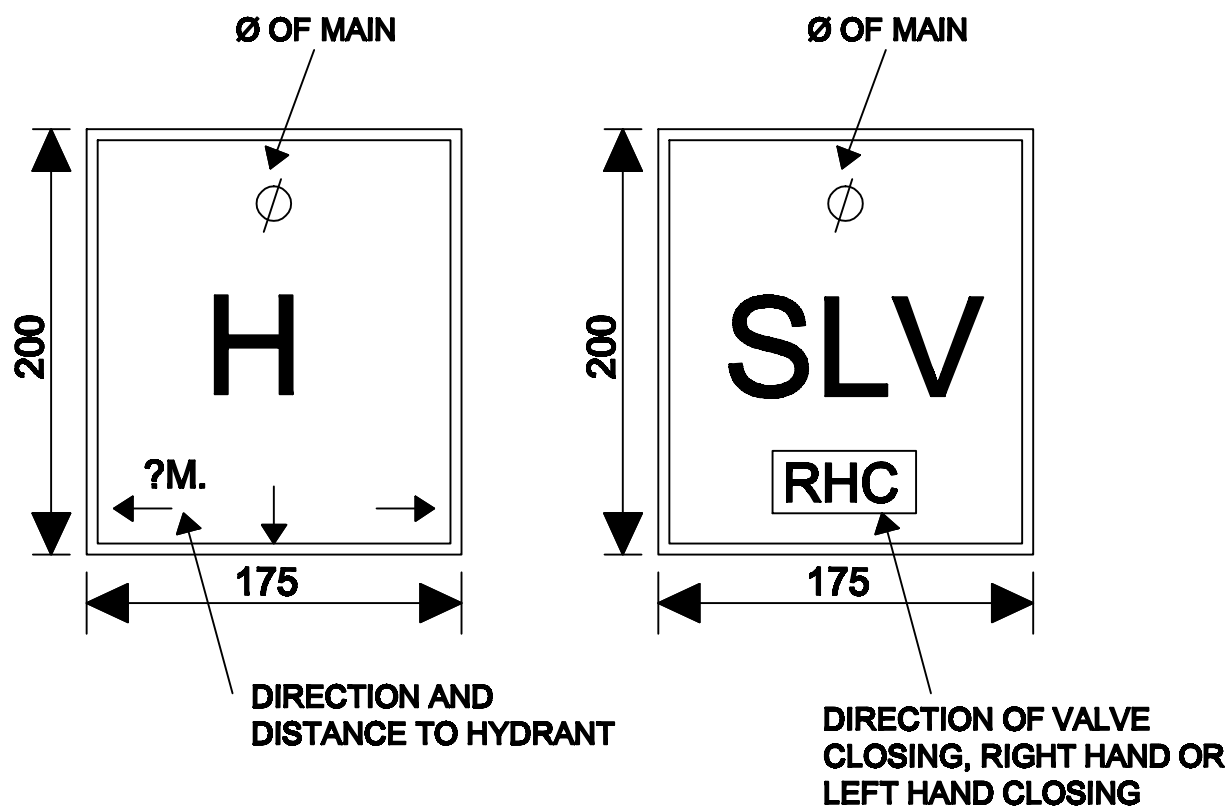
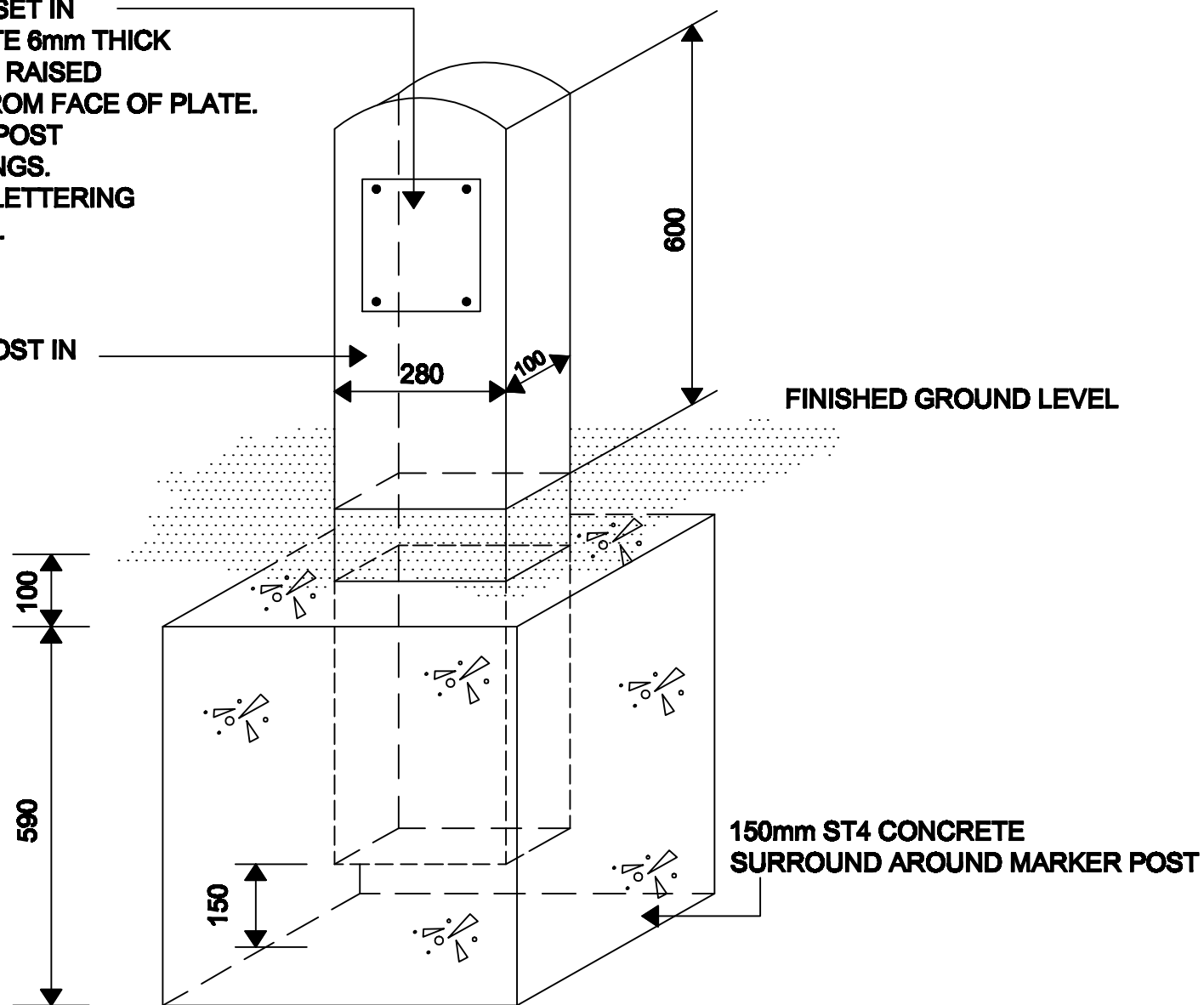


180mm X 210mm X 10mm DEEP INSET IN MARKER POST TO ACCOMMODATE 6mm THICK MARKER PLATE WITH 50mm HIGH RAISED LETTERS STANDING 6mm OUT FROM FACE OF PLATE. PLATE TO BE FIXED TO MARKER POST WITH ALL STAINLESS STEEL FIXINGS. PLATE TO BE PAINTED YELLOW. LETTERING TO BE PAINTED BLACK (2 COATS).

PRECAST CONCRETE MARKER POST IN CLASS 30/20 CONCRETE.



I.D. PLATES



MARKER POST

