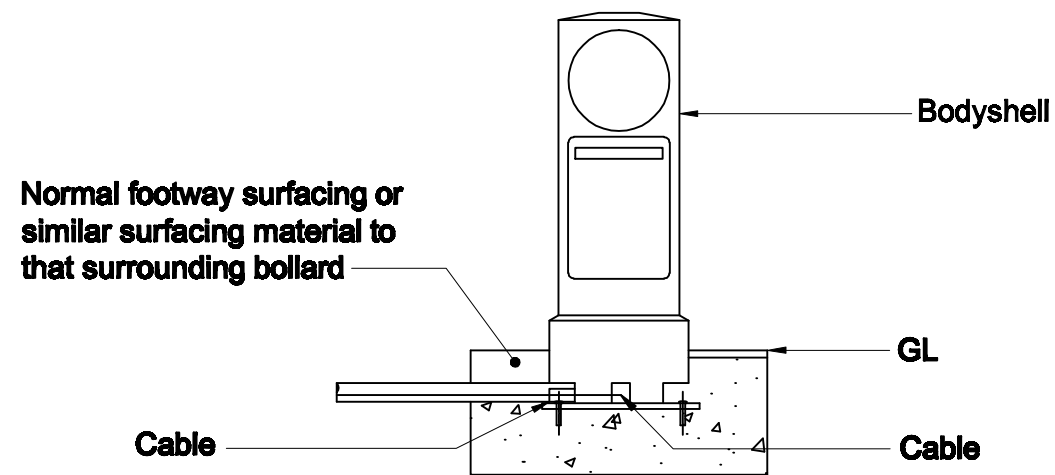
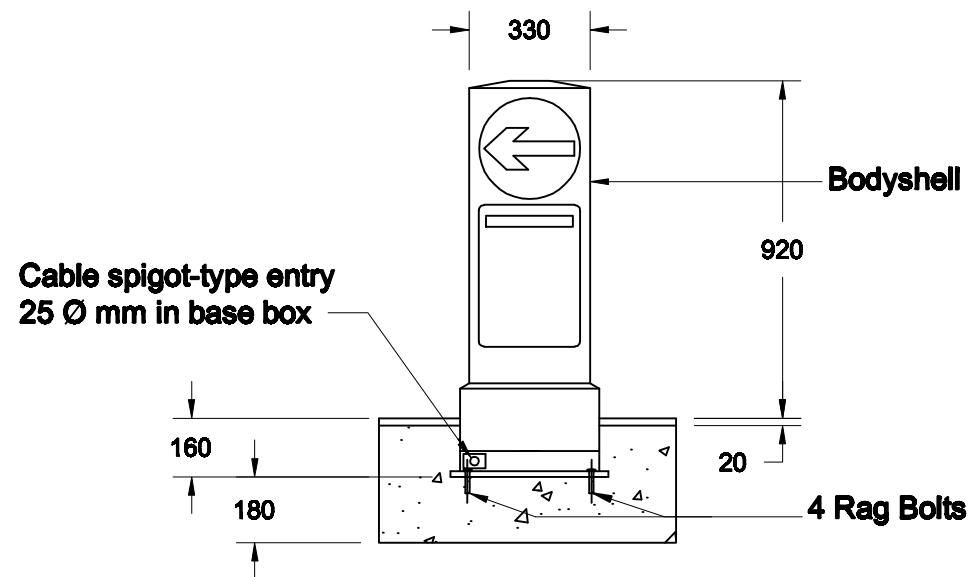


Plan



Section A-A'



Section B-B'

Notes:

1. All dimensions are in millimetres.
2. The base box shall be installed in accordance with the manufactures recommendations
3. Before the new bollard is fixed in place the precise position shall be agreed with the engineer.
4. The bollard shall not be illuminated without the engineers approval.
5. The distance between the bollard and the kerb shall not be less than 450mm.
6. The faces of the bollard shall be specified in the regulations and on the drawings.