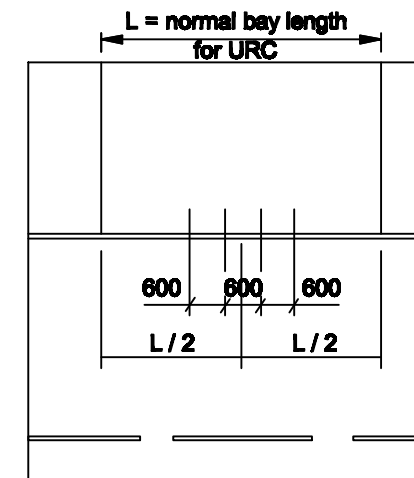


DETAIL AT B
Unreinforced bars next to
reinforced carriageway
Layout of tie bars



NOTES

1. ALL DIMENSIONS ARE IN MILLIMETRES.
2. Hardshoulders, hardstrips, lay-bys and tapers shall be of the same thickness as the concrete carriageway. Surface slabs with an aspect ratio > 2.5 (3.0 for limestone) shall be reinforced with the same reinforcement as main slab, if JRC. If URC, the minimum reinforcement shall be standard mesh C636, to BS 4483.
3. Transverse joints at normal positions shall be expansion or contraction joints. Extra joints to reduce slab length shall be warping joints.
4. See the Drawings for dimensions for tapers, lay-bys, etc.

