

# **IMPLEMENTATION SPECIFICATION FOR ROAD** **WORKS**

## **NA SERIES IM/900**

### **NUMBERED APPENDICES IM 9/1, IM 9/2, IM 9/3**

### **ROAD PAVEMENTS – BITUMINOUS BOUND MATERIALS**



*This Specification Series implements the requirements in  
Subsidiary Legislation 499.57, Part II (New Roads and Road  
Works Regulations) in accordance with the Agency for  
Infrastructure Malta ACT XXVIII, CAP. 588, Part I*

**Date:** March 2021

**Version:** v1.0

<b>900</b>	<b>APPENDIX 9/1 - ROAD PAVEMENTS - BITUMINOUS BOUND MATERIALS .....</b>	<b>3</b>
	<b>Decision Making for Mix Design .....</b>	<b>3</b>
	<b>Marshall Mix Design .....</b>	<b>4</b>
	<b>Performance Mix Design.....</b>	<b>5</b>
	<b>Factory Testing .....</b>	<b>6</b>
	<b>Site Testing .....</b>	<b>7</b>
	<b>Assessment.....</b>	<b>8</b>
<b>901</b>	<b>APPENDIX 9/2 – FACTORY PRODUCTION CONTROL.....</b>	<b>9</b>
<b>902</b>	<b>APPENDIX 9/3 – CE MARKING .....</b>	<b>10</b>

900 Appendix 9/1 - Road Pavements - Bituminous Bound Materials

Decision Making for Mix Design

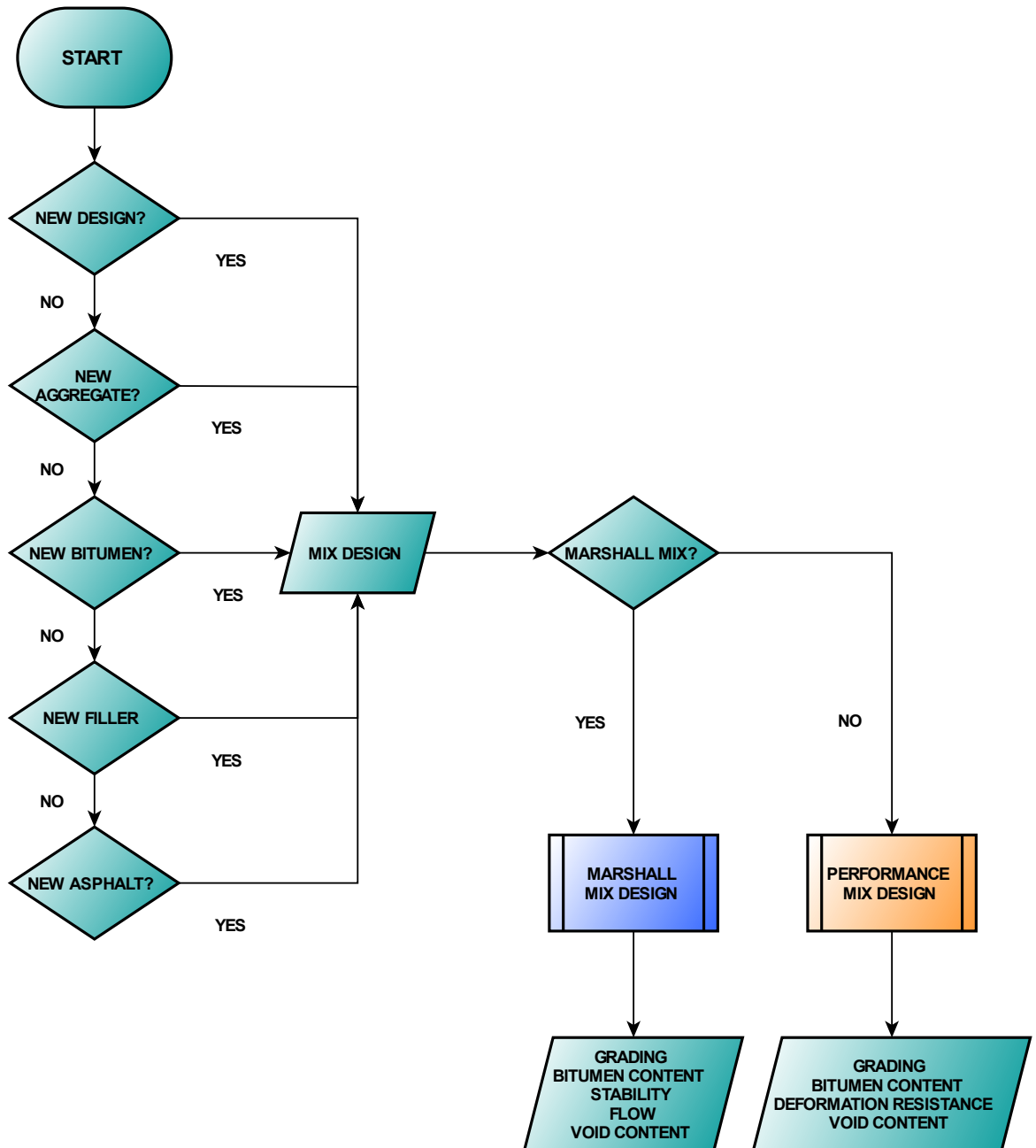


Figure 900-1: Decision making for mix design

Marshall Mix Design

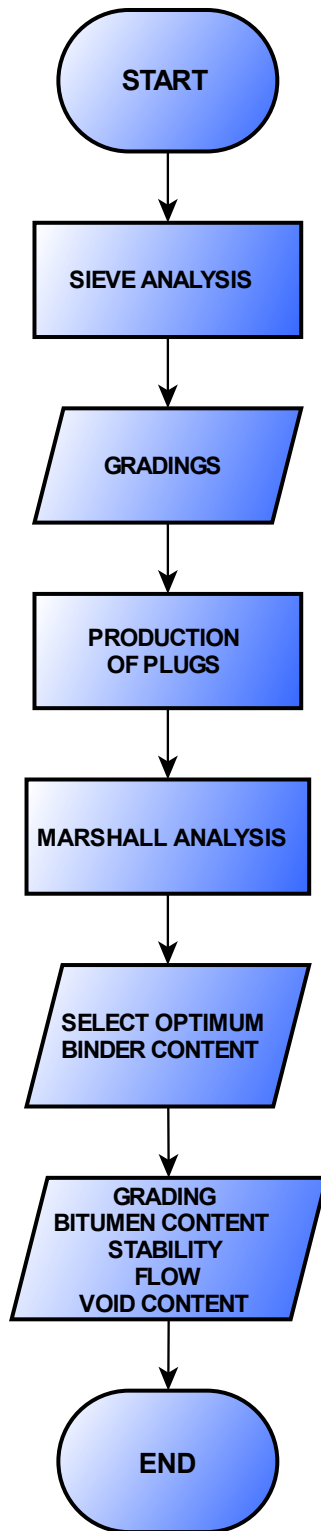


Figure 900-2: Marshall mix design

Performance Mix Design

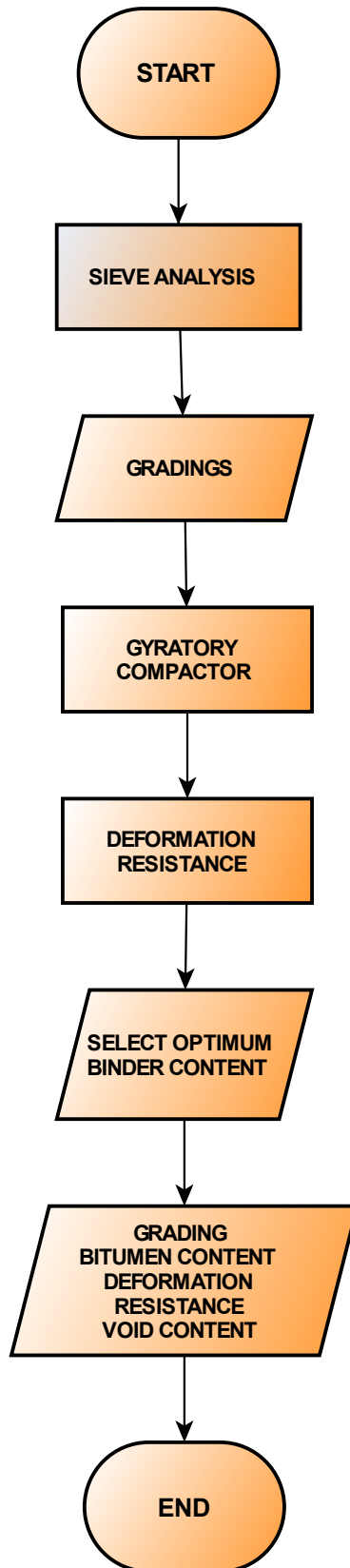


Figure 900-3: Performance mix design

Factory Testing

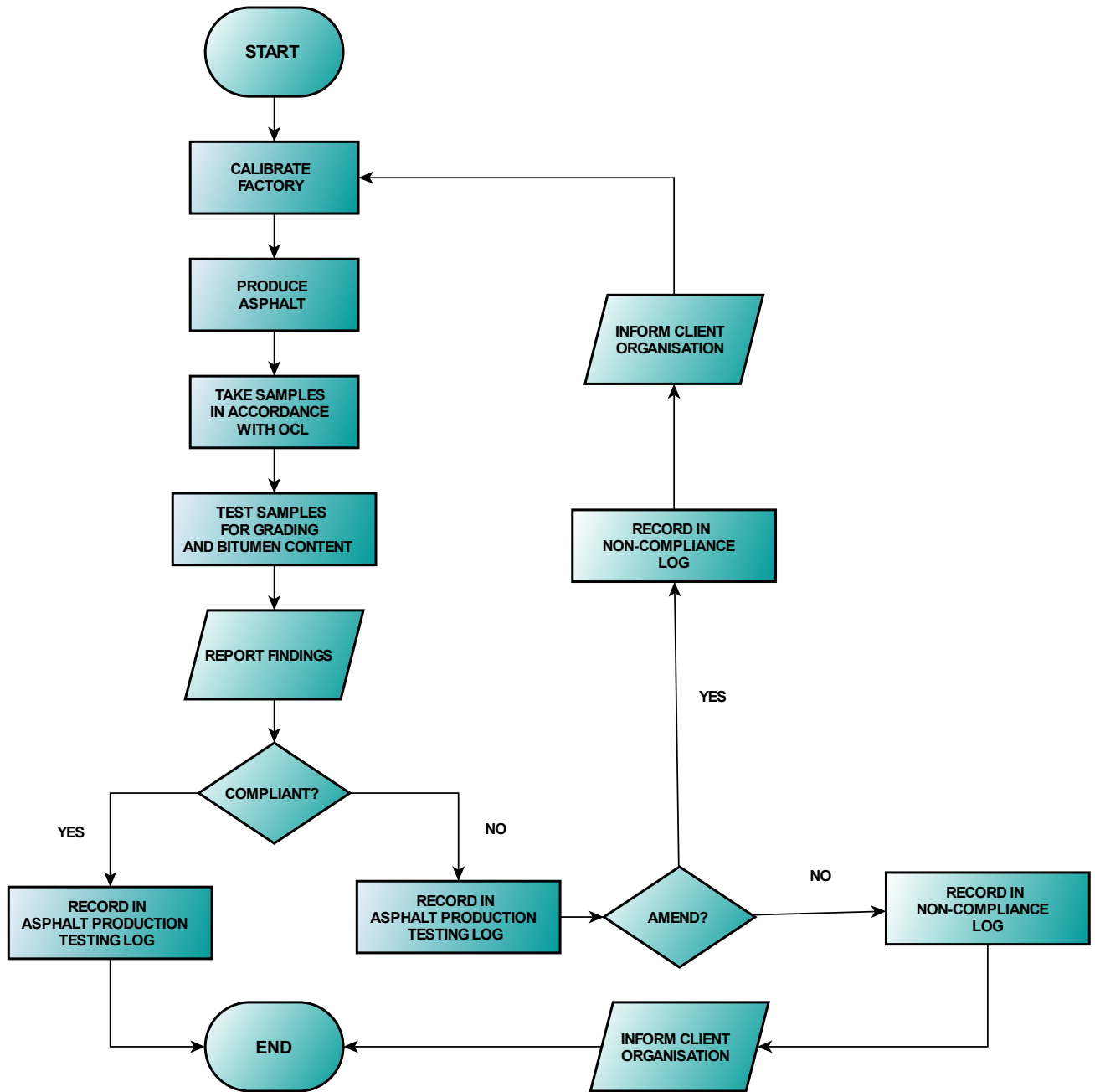


Figure 900-4: Factory testing

Site Testing

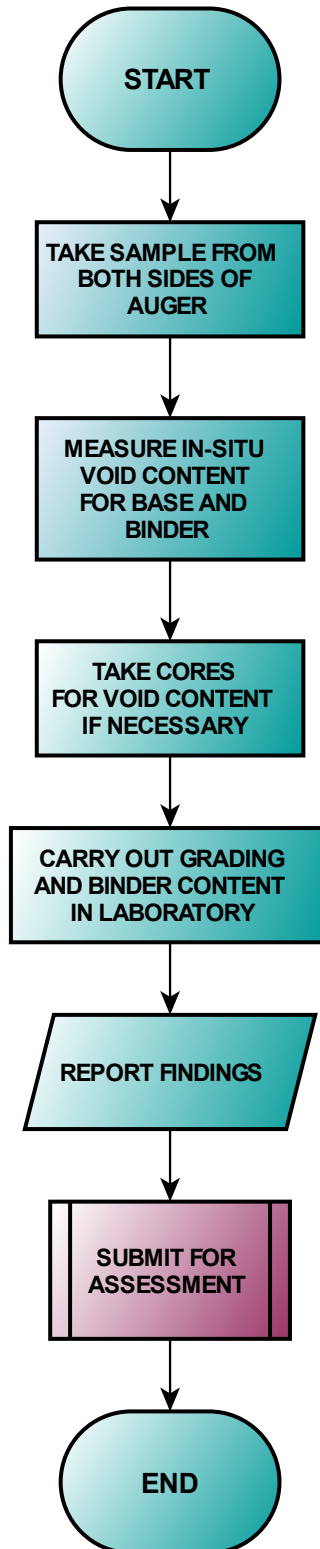


Figure 900-5: Site testing

Assessment

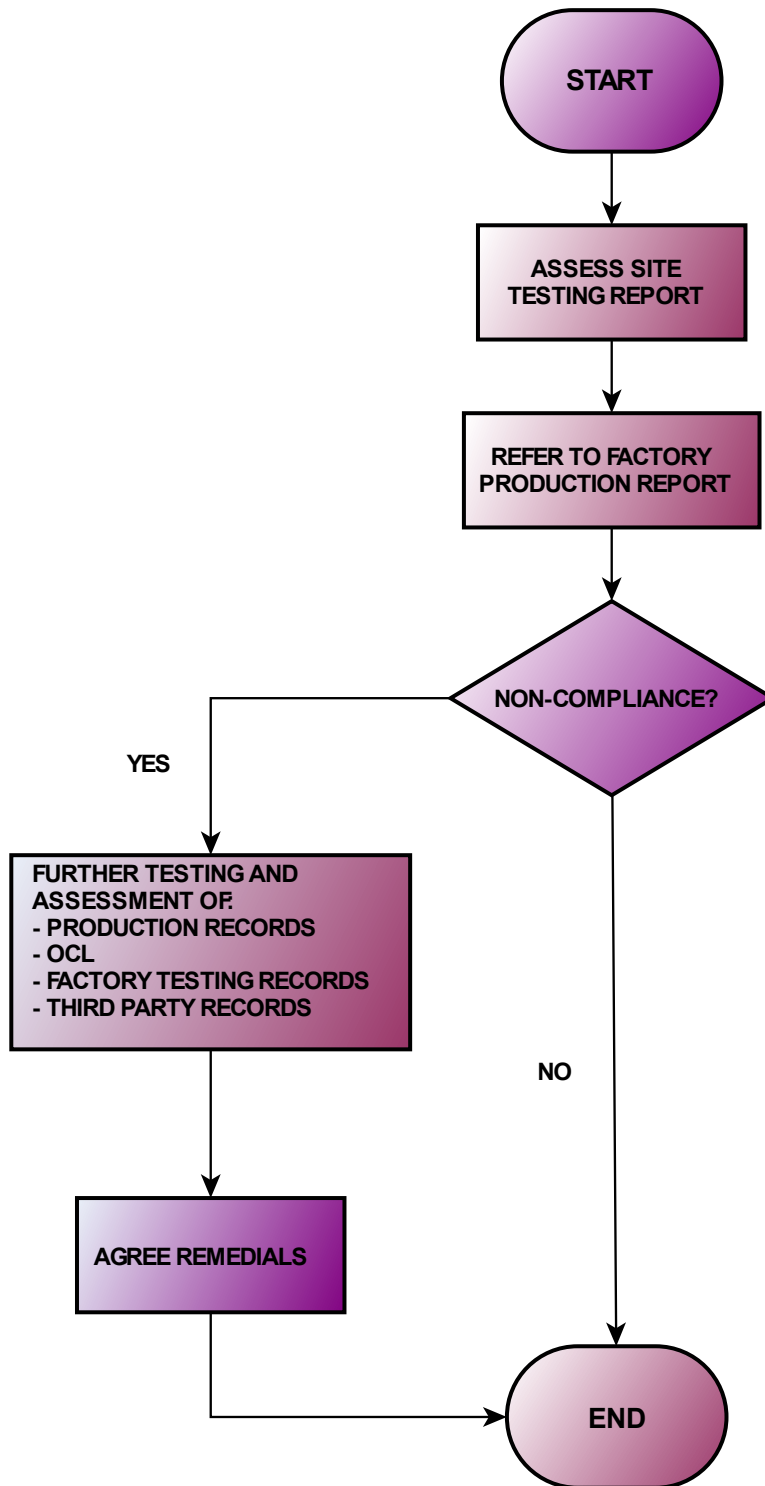


Figure 900-6: Assessment



901 Appendix 9/2 – Factory Production Control

Factory Production Control

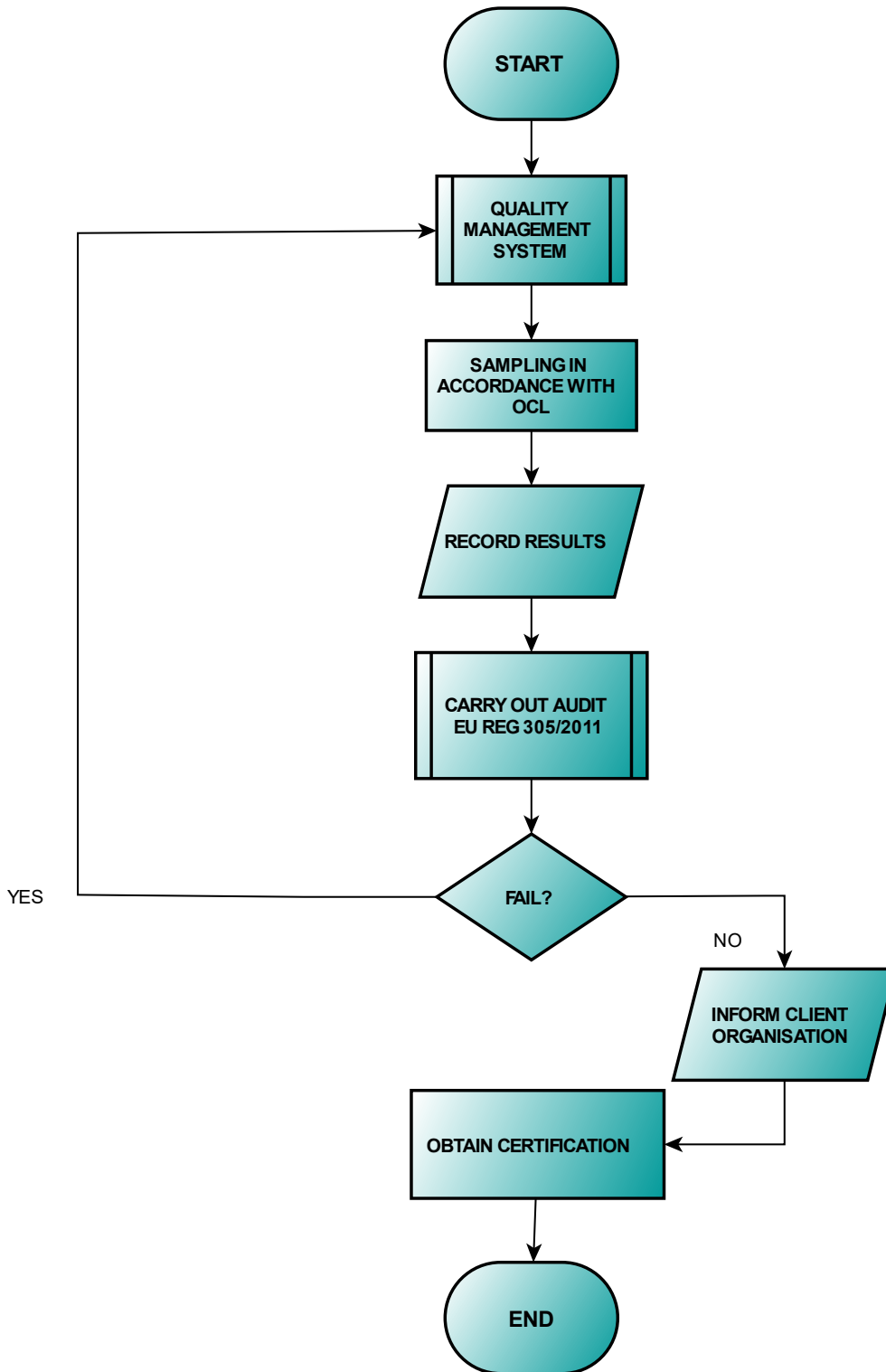


Figure 901-1: FPC

902 Appendix 9/3 – CE Marking

CE Marking

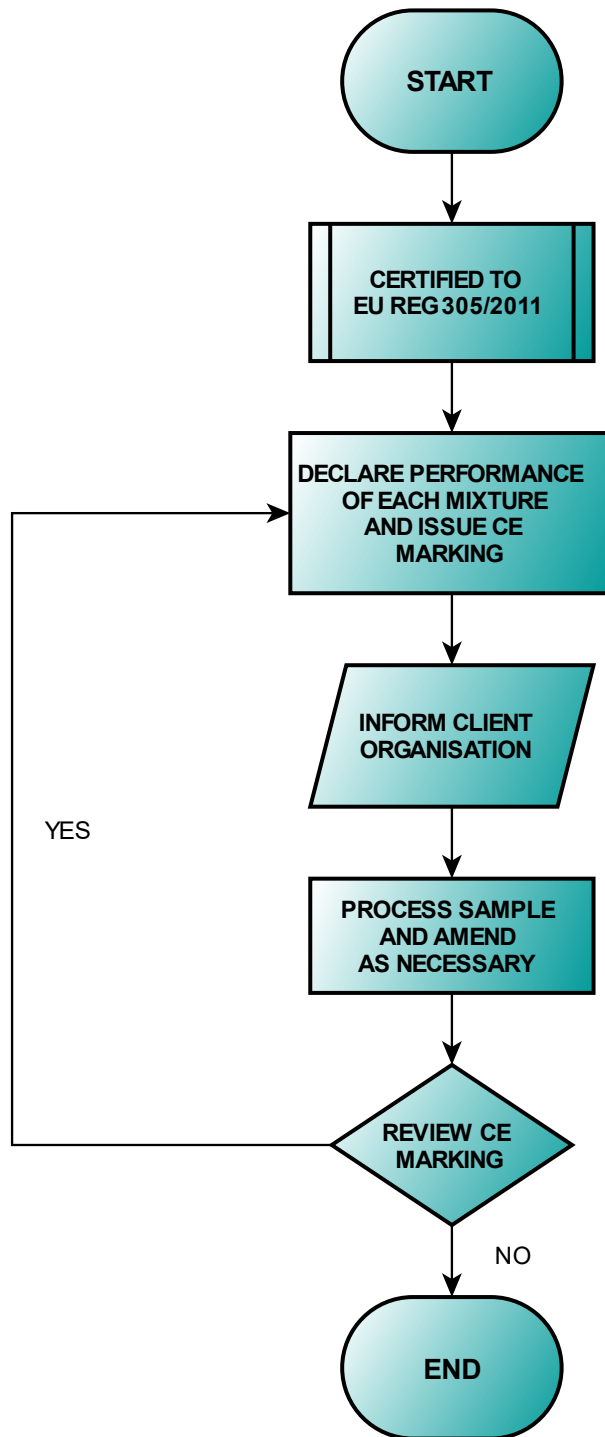


Figure 902-1: CE Marking